

## Course Information

---



# Beginning American Sign Language II (LN)

Salt Lake Community College

Humanities, Language, Culture, and ASL/I Department

ASL 1020. [REDACTED] — Fall 2024 — 4 credits

## Beginning ASL II (LN)

ASL1020 [REDACTED]

## Course Description

---

Second in a series of four courses which focus on expressive and receptive skills in American Sign Language and an introduction to American Deaf Culture. Major objective of the first year is to develop functional language ability in the Deaf community.

## Textbooks, Readings, and Course Materials

---

**Authors:** Padden, C. & Humphries, T.

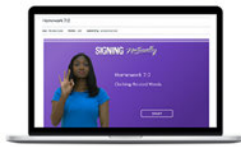
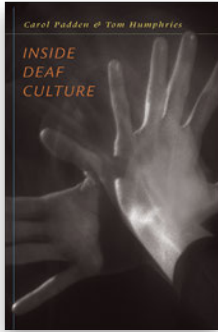
**Publication Date:** 2006

**Title:** Inside Deaf Culture

**Publisher:** Harvard University Press.

**Link:** <https://www.amazon.com/Inside-Deaf-Culture-Carol-Padden/dp/0674022521>

**ISBN:** 978-0674022522



**Authors:** Smith, C., Mikos, K., & Lentz, E.M.

**Publication Date:** 2014

**Title:** Interactive Online Student Materials for Signing Naturally  
Units 7-12

**Publisher:** DawnSignPress

**Link:** <https://www.dawnsign.com/products/details/interactive-online-student-materials-for-signing-naturally-units-7-12>

For more information on textbook accessibility, contact Accessibility & Disability Services at [ads@slcc.edu](mailto:ads@slcc.edu).

## Course Prerequisites/Co-requisites

---

Prerequisites: ASL 1010

## Course Student Learning Outcomes

---

- Students will communicate in ASL.
- Students will gain knowledge and understanding of Deaf culture.
- Students will make connections with other disciplines by acquiring information about those disciplines through the use of ASL and an understanding of Deaf culture.
- Students will develop insights into the nature of language and culture through comparisons of ASL and Deaf culture and their own culture.
- Students will participate in the Deaf community through the use of ASL and with knowledge of Deaf culture.

## Grading Scale

---

### Final Grade Distribution

<i>Grade:</i>	<b>A</b>	<b>A-</b>	<b>B+</b>	<b>B</b>	<b>B-</b>	<b>C+</b>
<i>Percent:</i>	≥ 94%	≥ 90%	≥ 87%	≥ 84%	≥ 80%	≥ 77%

<i>Grade:</i>	<b>C</b>	<b>C-</b>	<b>D+</b>	<b>D</b>	<b>D-</b>	<b>E</b>
<i>Percent:</i>	≥ 74%	≥ 70%	≥ 67%	≥ 64%	≥ 60%	< 60%

## Assignment Schedule

---

<b>Due Date</b>	<b>Assignment Name</b>	<b>Assignment Type</b>	<b>Points</b>
	<a href="#">Roll Call Attendance</a>	Assignment	100
	<a href="#">Video Lecture: 7.1</a>	Assignment	
	<a href="#">Video Lectures: 10.1-10.3</a>	Assignment	
	<a href="#">Video Lectures: 10.10-10.11</a>	Assignment	
	<a href="#">Video Lectures: 10.12 &amp; Review</a>	Assignment	
	<a href="#">Video Lectures: 10.4-10.5</a>	Assignment	
	<a href="#">Video Lectures: 10.6-10.7</a>	Assignment	
	<a href="#">Video Lectures: 10.8-10.9</a>	Assignment	

<b>Due Date</b>	<b>Assignment Name</b>	<b>Assignment Type</b>	<b>Points</b>
	<a href="#">Video Lectures: 11.1-11.2</a>	Assignment	
	<a href="#">Video Lectures: 11.11-11.13</a>	Assignment	
	<a href="#">Video Lectures: 11.3-11.5</a>	Assignment	
	<a href="#">Video Lectures: 11.6-11.8</a>	Assignment	
	<a href="#">Video Lectures: 11.9-11.10</a>	Assignment	
	<a href="#">Video Lectures: 7.11-7.12</a>	Assignment	
	<a href="#">Video Lectures: 7.13, Review</a>	Assignment	
	<a href="#">Video Lectures: 7.2-7.4</a>	Assignment	
	<a href="#">Video Lectures: 7.5-7.8</a>	Assignment	
	<a href="#">Video Lectures: 7.9-7.10</a>	Assignment	
	<a href="#">Video Lectures: 8.1-8.2</a>	Assignment	
	<a href="#">Video Lectures: 8.11-8.12</a>	Assignment	
	<a href="#">Video Lectures: 8.13-8.14</a>	Assignment	
	<a href="#">Video Lectures: 8.3-8.4</a>	Assignment	

<b>Due Date</b>	<b>Assignment Name</b>	<b>Assignment Type</b>	<b>Points</b>
	<a href="#">Video Lectures: 8.5-8.7</a>	Assignment	
	<a href="#">Video Lectures: 8.8-8.10</a>	Assignment	
	<a href="#">Video Lectures: 9.1-9.3</a>	Assignment	
	<a href="#">Video Lectures: 9.11-9.13</a>	Assignment	
	<a href="#">Video Lectures: 9.14 &amp; Review</a>	Assignment	
	<a href="#">Video Lectures: 9.4-9.5</a>	Assignment	
	<a href="#">Video Lectures: 9.6-9.7</a>	Assignment	
	<a href="#">Video Lectures: 9.8-9.10</a>	Assignment	
8/22	<a href="#">Introduce Yourself</a>	Discussion	2
8/28	<a href="#">7:1 - Conversation 1: Identifying a Person</a>	Assignment	100
8/28	<a href="#">7:2 - Clothing-Related Words</a>	Assignment	100
8/28	<a href="#">7:3 - Guess My Number</a>	Assignment	100
8/28	<a href="#">7:4 - Conversation 2: Describing Personal Items</a>	Assignment	100

<b>Due Date</b>	<b>Assignment Name</b>	<b>Assignment Type</b>	<b>Points</b>
9/4	<a href="#">7:5 - Translating Sentences with "Have" 1</a>	Assignment	100
9/4	<a href="#">7:6 - Translating Sentences with "To Drive"...</a>	Assignment	100
9/4	<a href="#">7:7 - Asking How Many</a>	Assignment	100
9/4	<a href="#">7:8 - Conversation 3</a>	Assignment	100
9/4	<a href="#">IDC Quiz#1 (ch.1)</a>	Quiz	8
9/9	<a href="#">7:10 - Translating Sentences with "Have" 2</a>	Assignment	100
9/9	<a href="#">7:11 - Cultural: Greeting and Leave-Takings</a>	Assignment	100
9/9	<a href="#">7:12 - Translating Sentences with "To Drive"... 2</a>	Assignment	100
9/9	<a href="#">7:9 - Telling the Year</a>	Assignment	100
9/11	<a href="#">7:13 - Story: A Memorable Costume</a>	Assignment	100
9/11	<a href="#">IDC Quiz#2 (ch.2)</a>	Quiz	8
9/11	<a href="#">Unit 7 Self-Assessment</a>	Assignment	100
9/16	<a href="#">8:1 - Conversation 1</a>	Assignment	100
9/16	<a href="#">8:2 - Talking about Months</a>	Assignment	100

<b>Due Date</b>	<b>Assignment Name</b>	<b>Assignment Type</b>	<b>Points</b>
9/16	<a href="#">Unit 7 Exam</a>	Quiz	30
9/18	<a href="#">8:3 - Agreement Verbs 1</a>	Assignment	100
9/18	<a href="#">8:4 - Conversation 2</a>	Assignment	100
9/23	<a href="#">8:5 - Negations 1</a>	Assignment	100
9/23	<a href="#">8:6 - Giving Phone Numbers</a>	Assignment	100
9/23	<a href="#">8:7 - Asking for Advise 1</a>	Assignment	100
9/25	<a href="#">8:10 - Conversation 4: Conjunction</a>	Assignment	100
9/25	<a href="#">8:8 - Asking for a Sign</a>	Assignment	100
9/25	<a href="#">8:9 - Agreement Verbs 2</a>	Assignment	100
9/25	<a href="#">IDC Quiz#3 (ch.3)</a>	Quiz	8
9/30	<a href="#">8:11 - Negations 2</a>	Assignment	100
9/30	<a href="#">8:12 - Story: The Motel Story &amp; Deaf Profile: Nathie Marbury</a>	Assignment	100
9/30	<a href="#">8:13 - Cultural: Minimizing Interruptions</a>	Assignment	100
9/30	<a href="#">8:14 - Cultural: Name Signs</a>	Assignment	100
10/2	<a href="#">IDC Quiz#4 (ch.4)</a>	Quiz	8

<b>Due Date</b>	<b>Assignment Name</b>	<b>Assignment Type</b>	<b>Points</b>
10/2	<a href="#">Unit 8 Self-Assessment</a>	Assignment	100
10/2	<a href="#">Unit 8 Exam</a>	Quiz	29
10/7	<a href="#">9:1 - Describing a Neighborhood 1</a>	Assignment	100
10/7	<a href="#">9:2 - Places in the Neighborhood</a>	Assignment	100
10/7	<a href="#">9:3 - Giving the Time 1</a>	Assignment	100
10/9	<a href="#">9:4 - Describing a Neighborhood 2 &amp; Using Rhetorical Questions</a>	Assignment	100
10/9	<a href="#">9:5 - Giving Directions: Next to, Across From</a>	Assignment	100
10/9	<a href="#">Cultural Film Reflection Essay#1</a>	Assignment	10
10/14	<a href="#">9:4 - Narrative about Your Neighborhood</a>	Assignment	2
10/14	<a href="#">9:6 - Yes-No Questions 1</a>	Assignment	100
10/14	<a href="#">9:7 - Conversation 1: Element, Descriptive and Locative Classifiers</a>	Assignment	100
10/16	<a href="#">9:10 - Suggesting a Place to Eat</a>	Assignment	100



<b>Due Date</b>	<b>Assignment Name</b>	<b>Assignment Type</b>	<b>Points</b>
10/16	<a href="#">9:8 - Giving_ Directions: Where to Turn</a>	Assignment	100
10/16	<a href="#">9:9 - Giving the Time 2</a>	Assignment	100
10/16	<a href="#">IDC Quiz#5 (ch.5)</a>	Quiz	8
10/21	<a href="#">9:11 - Giving_ Directions: Perspective Shift</a>	Assignment	100
10/21	<a href="#">9:12 - Yes-No Questions 2</a>	Assignment	100
10/21	<a href="#">9:13 - Cultural: Keeping Others Informed</a>	Assignment	100
10/23	<a href="#">9:14 - Story: The Hitchhiker &amp; Deaf Profile: Eric Malzkuhn</a>	Assignment	100
10/23	<a href="#">Unit 9 Self-Assessment</a>	Assignment	100
10/23	<a href="#">Unit 9 Exam</a>	Quiz	31
10/28	<a href="#">10:1 - Conversation 1: Temporal Aspect</a>	Assignment	100
10/28	<a href="#">10:2 - Telling the Price 1</a>	Assignment	100
10/28	<a href="#">10:3 - Wh-Word Questions 1</a>	Assignment	100
10/30	<a href="#">10:4 - Conservation 2: Predicative Adjective</a>	Assignment	100

<b>Due Date</b>	<b>Assignment Name</b>	<b>Assignment Type</b>	<b>Points</b>
10/30	<a href="#">10:5 - Numbers: Telling the Price 2</a>	Assignment	100
10/30	<a href="#">IDC Quiz#6 (ch.6)</a>	Quiz	8
11/4	<a href="#">10:6 - Conversation 3: Using Role Shift to Describe Situation</a>	Assignment	100
11/4	<a href="#">10:7 - Telling Where Items are Located</a>	Assignment	100
11/6	<a href="#">10:10 - Cultural: Interrupting Others</a>	Assignment	100
11/6	<a href="#">10:11 - Story: A Lesson Learned &amp; Deaf Profile: Alice Terry</a>	Assignment	100
11/6	<a href="#">10:8 - Wh-Word Questions 2</a>	Assignment	100
11/6	<a href="#">10:9 - Comparing Personal Qualities</a>	Assignment	100
11/11	<a href="#">10:12 - Looking for A Misplaced Item</a>	Assignment	100
11/11	<a href="#">Unit 10 Self-Assessment</a>	Assignment	100
11/11	<a href="#">Unit 10 Exam</a>	Quiz	27
11/13	<a href="#">11:1 - Discussing One's Knowledge and Abilities</a>	Assignment	100
11/13	<a href="#">11:2 - Numbers Review</a>	Assignment	100
11/13	<a href="#">IDC Quiz#7 (ch.7)</a>	Quiz	10

<b>Due Date</b>	<b>Assignment Name</b>	<b>Assignment Type</b>	<b>Points</b>
11/18	<a href="#">11:3 - Asking for Opinion about Someone</a>	Assignment	100
11/18	<a href="#">11:4 - Describing Reactions</a>	Assignment	100
11/18	<a href="#">11:5 - States and Provinces 1</a>	Assignment	100
11/20	<a href="#">11:6 - Conversation 2: Narrating about Canceled Plans &amp; Signs for Thinking</a>	Assignment	100
11/20	<a href="#">11:7 - First &amp; Last Time You Did Something</a>	Assignment	100
11/20	<a href="#">11:8 - Numbers Review</a>	Assignment	100
11/20	<a href="#">Cultural Film Reflection Essay#2</a>	Assignment	10
11/25	<a href="#">11:10 - States and Provinces 2</a>	Assignment	100
11/25	<a href="#">11:9 - Discussing Personal Goals</a>	Assignment	100
11/25	<a href="#">IDC Quiz#8 (ch.8)</a>	Quiz	8
12/2	<a href="#">11:11 - Story: Busted!</a>	Assignment	100
12/2	<a href="#">11:12 - ASL Student in the Community</a>	Assignment	100
12/2	<a href="#">11:13 - Deaf Profile: Chuck Baird - De'VIA</a>	Assignment	100

Due Date	Assignment Name	Assignment Type	Points
12/2	<a href="#">Share Your Personal Goals</a>	Assignment	5
12/4	<a href="#">Unit 11 Self-Assessment</a>	Assignment	100
12/4	<a href="#">Unit 11 Exam</a>	Quiz	26
12/4	<a href="#">ASL Tutoring</a>	Assignment	20
12/4	<a href="#">Community Activity Report</a>	Assignment	25
12/11	<a href="#">Final Exam</a>	Quiz	41

## Advising and Counseling Support Services

At our institution, we are committed to supporting your academic and personal growth. That's why we offer a range of advising and counseling services to help you navigate the challenges of college life. To learn more about the resources available to you and how to access them, please visit the Institutional Syllabus under the Advising and Counseling Support Services tab: <https://slcc.instructure.com/courses/530981/pages/institutional-syllabus>. Our advising team and the support centers across campus are here to support you in achieving your goals and overcoming any obstacles you may face.

## Learning Support and Tutoring Services

We are pleased to offer a range of tutoring and learning support services to help you achieve your academic goals. Whether you need assistance with a specific subject or want to improve your study skills, you have many options for tutoring or other support.

To learn more about the services we offer and how to access them, please visit the Institutional Syllabus under the Tutoring and Learning Support tab: <https://slcc.instructure.com/courses/530981/pages/institutional-syllabus>. We encourage you to take advantage of these resources to help you succeed in your studies. If you

have any questions or would like to schedule a tutoring session, please don't hesitate to reach out to us. We are here to support you in any way we can.

## Institutional Policies

---

As members of our academic community, we would like to invite you to review the Institutional Syllabus which covers important policies and procedures. This document contains important links for students on the code of student rights and responsibilities, academic integrity, and grading policies, Title IX and other important acknowledgements. By familiarizing yourself with this information, you can help us create a safe and respectful environment for everyone.

You can access the document by clicking on the following link:

<https://slcc.instructure.com/courses/530981/pages/institutional-syllabus>

## Student Academic Calendar

---

As students you should be aware of all important dates in the semester, such as the day that courses begin and end, as well as the drop date and the last day to withdraw. To learn more about those dates, navigate to the Student Academic Calendar below:

[SLCC Student Academic Calendar](#)