
Music Theory I

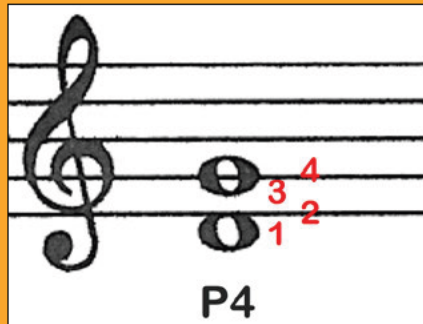
MUSC 1110

Welcome!

This is the first semester of a four-semester series.

Materials to be covered: music fundamentals, beginning harmonic progression, and voice leading.

Music majors must take this course concurrently with Sight Singing/Ear Training I (Music 1130).



Instructor Name



Instructor Email



Instructor Phone



What is this course about?

Catalog Description

Music Theory I covers: Pitch Identification, Scales, Intervals, Rhythmic Notation, Building Triads, Basic Roman Numeral Analysis, Figured Bass, Primary Chords in Harmonic Progression, Basic Cadences, the Cadential Six-Four Chord and Voice Leading Using Diatonic Chords in Root Position. We cover the first 15 chapters of the text (all of Part I and the first eight chapters of Part II).

Course Objectives —

Master music theory concepts:

- scales
- intervals
- rhythmic notation
- building triads
- basic Roman Numeral analysis
- figured bass
- primary chords
- basic cadences
- cadential six-four chord
- voice leading
- diatonic chords in root position



Demonstrate ability to perform

- analysis of musical works with topics outlined above

Compose or arrange music

- homophonic chorale style
- keyboard voicing



Learning Outcomes

After successfully completing this course you should be able to:

- Identify notes on a standard five-line staff in bass and treble clef
- Understand basic rhythm patterns and proper notation
- Determine the meter of a piece of music
- Identify key signatures including major and minor modes
- Begin triad construction and fundamental harmony

Requirements for Music Majors

- Music majors **must** take this course concurrently with Ear Training/Sight Singing I (Music 1130)
- Non-music majors **should** take this course concurrently with Music 1130
- “C” or better to progress to MUSC 1120 at Salt Lake Community College
- “B-“ or better to receive transfer credit at University of Utah

SUPPLIES:

- ◆ 10-12 stave manuscript paper
- ◆ pencil and eraser
- ◆ access to music notation software

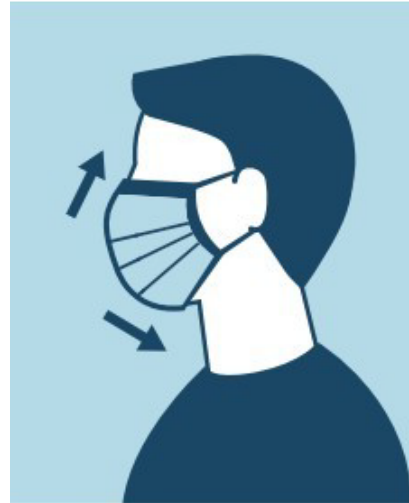
★ **YOU WILL BE REQUIRED TO COMPLETE ASSIGNMENTS IN NOTATION SOFTWARE**

SLCC Syllabus Statement on Face Coverings

Salt Lake Community College is committed to face coverings to protect everyone on campus.

Reusable cloth masks are available at campus information desks (one per person).

Students who need a face covering will be asked to retrieve it or provided with a disposable mask.



be

Hybrid Course Description*

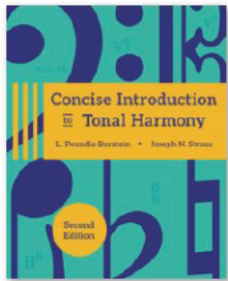
*Hopefully we will not need these restrictions this semester. But, just in case...

Because of potential social distancing restrictions, we may be limited to the amount of seats we can have in the classroom. Therefore, you may be asked to occasionally rotate between face-to-face (F2F) and online (remote) instruction. To make this fair for everyone, a schedule will be set up and everyone will have the same amount of days in class and off campus.

Assigned Attendance — Alternatively, I may need to assign students to come on specific days and we will divide instruction between parts of the class. This is not optimal but it will allow everyone the same amount of F2F time on campus.

Safe Behavior — Please be aware of personal space and social distancing guidelines. I know we have heard this for nearly a year and many are tired of it. However, there are those who are genuinely at risk and we want to make sure everyone is safe and has the same educational experience.

Classroom Layout — The classroom furniture is set up to adhere to recommended distancing guidelines (currently six feet apart). However, this will not stop us from collaborating. We will be using the “Collaborate” feature on Canvas (if possible), working at the white board, consulting with peers, etc. Please do not let social and physical distance be a barrier to communication. We will still interact and will be very creative about it.



Concise Introduction to Tonal Harmony

SECOND EDITION

L. Poundie Burstein & Joseph N. Straus
Ebook & Learning Tools with Total Access registration code: 1080 day access.

Purchase Options

[Click here for access](#)



Ebook



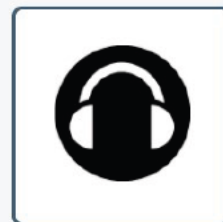
Know It? Tutorials



Show It!
InQuizitive
Activities



Workbook
Exercises
Powered by
Noteflight



Playlists

Required Materials

Textbook: *Concise Introduction to Tonal Harmony*, L. Poundie Burstein and Joseph N. Straus, 2nd edition

** ebook or printed books are acceptable*

Workbook: Workbook for *Concise Introduction to Tonal Harmony*, L. Poundie Burstein and Joseph Straus, 2nd edition

- * We will do assignments from the workbook as well as online
- * You will need a print hardcopy of the book for class and assignments

Noteflight version included with your textbook. The bulk of your homework assignments are from this book.

Digital Products: Ebook, InQuizitive, and Workbook

[Norton Digital Website](#)

**Student access: Students will enter a registration code or make an online purchase to gain access.*

THIS BOOK IS USED IN THEORY II, III, AND IV

Late Work/Missed Exam Policy:

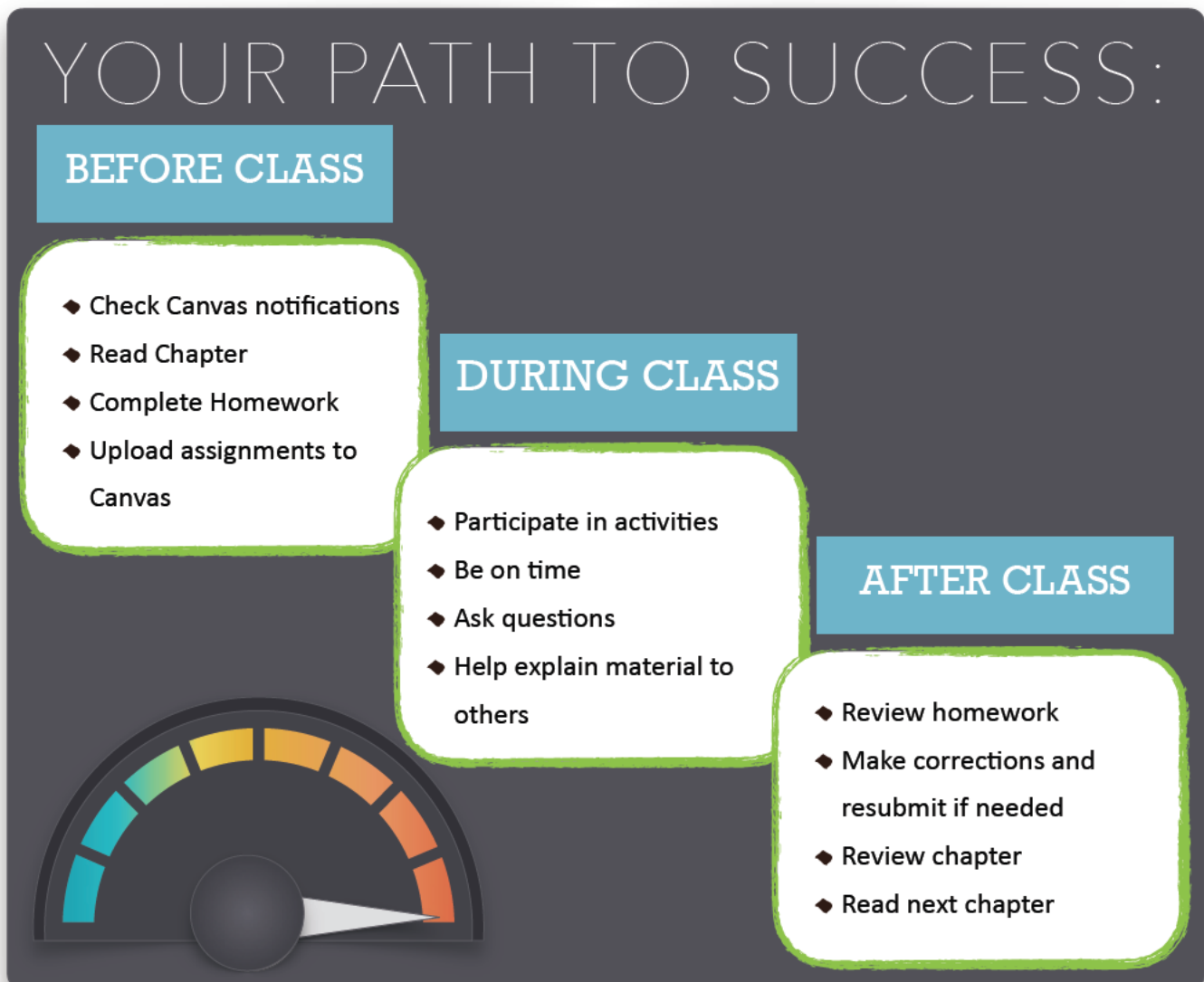
All Students are expected to complete learning tasks on schedule.

If you are not in class you will not learn the material and you will not be able to correct your assignments for your learning.

I am more than willing to help you if you are in class regularly. Do not ask me to explain and make up material if you are not in class.

*If you anticipate missing a class homework can be submitted on Canvas **before class**. Many quizzes are in a group format and cannot be made up.*

LATE WORK ACCEPTED BUT REDUCED 10% PER DAY LATE



Required Work:

This course requires more than just what we do in class. **Expect an assignment EVERY DAY to practice your skills and increase your knowledge.**

Practice Assignments and Graded Assignments

35% of Grade

15 Practice Assignments = 10-30 points each

15 Graded Assignments = 50 points each

DUE AT THE BEGINNING OF CLASS.

Submission Details: All assignments are **submitted through Canvas**. The assignments are posted on Canvas in the modules.

Practice Assignments: (Labeled PA in the assignment list) — These are discussed in class at the beginning. Many are graded on a complete/incomplete basis. These contribute to your participation grade and add to class discussion.

Part of the PA will be Peer Review on Canvas. You will review your classmates' work and comment online and then we will go over each other's work in class.

Graded Assignments are turned in for grading. I will correct these and hand them back to you. You may make corrections to them and hand them back in for regrading. **There is a two-week maximum for do-overs.**

ASSIGNMENTS AND SEMESTER PROJECT must be in music notation software.

- I recommend *Noteflight*, although there are other equally good applications (such as *Sibelius* or *MuseScore*).
- The use of such software will not be taught in this class beyond a quick overview.
- MUSC 1510 Desktop Music Publishing provides more advanced instruction in the use of music notation software.
- The college has a music computer lab with *Finale* installed that is available for student use. This computer lab is located in SCM 2-081.
- *Finale* Notepad is a free version of *Finale* that is available for download at <http://www.finalemusic.com/notepad/default.aspx>.

Unit Exams

20% of Grade

There are four exams at the end of each unit.

Exams/Final Project**20% of Grade**

Mid-term Exam

100 points

Final Project

200 points

Participation**25% of Grade**

100 points

Attendance, practice assignments, peer review of assignments, and class engagement count toward participation.

ACTIVE LEARNING: This class uses a team-based approach that accomplishes two goals:

- match the skilled with the lesser skilled
- create a real-life environment of working together to gain a desired outcome.

Active learning contributes to your knowledge of music by enabling peer teaching and direct application of the course material.

THIS CLASS REQUIRES A LOT OF WORK OUTSIDE OF CLASS

This is a core music major class and because it is a 3-credit hour class you

can expect to do up to 6 hours of homework per week. Take your time to learn the material. It can be frustrating at times but it all builds on itself so concentrate on the basics — scales, intervals, chords.

Pandemic Statement: In light of COVID-19 restrictions and uncertainties, adjustments may be made to assignments, schedule and due dates. Please check Canvas for the most up-to-date information.

Fall 2024 Tentative Schedule

Due dates and schedule changes will be updated on Canvas throughout the semester

	TUESDAY	THURSDAY
Week 1	Course Overview — Syllabus Placement Exam Chapter 0, 1: Notation of Pitch and Rhythm	Ch0 PA* Ch1 PA *Practice Assignment
Week 2	Chapter 2: Scales GA1**	Ch2 PA* **GA Graded Assignment
Week 3	Chapter 3: Intervals Ch2 GA	Ch3 PA Test # 1
Week 4	Chapter 3: Triads and Seventh Chords Ch3 GA	Ch4 PA
Week 5	Chapter 4: Four-part Harmony Ch4 GA	Ch4 PA Test # 2
Week 6	Chapter 5: Voice Leading	Ch5 PA
Week 7	Chapter 6: Harmonic Progression Chapter 7: Melodic Elaboration Ch5 GA	Ch6-7 PA
Week 8	Chapter 7: Melodic Elaboration Ch 6-7 GA	Mid-term
Week 9	Chapter 9: I and V	
Week 10	Chapter 10: The Dominant Seventh Chord V7	Ch9 PA Test # 3
Week 11	Chapter 10: The Dominant Seventh Chord V7 Ch9 GA	Ch10 PA
Week 12	Chapter 11: I6 and V6 Ch10 GA	Ch11 PA
Week 13	Chapter 12: V6/5 and V4/2 Ch11 GA	Test # 4
Week 14	Chapter 12: V6/5 and V4/2 Ch12 PA	
Week 15	Chapter 13: V4/3 and viio6 Ch12 GA	Ch13 PA
Week 16	Chapter 13: V4/3 and viio6 Ch13 GA	Semester Project Final Exam

Finals Week

Q&A

<i>What is the best way to contact the professor?</i>	<p>To speak in person, try to catch me after class or make an appointment. Email is generally the best way to contact me.</p> <p>During the week (M-F), I will do my best to respond to messages within 24 hours. Remember to include the name of the course in the subject line and your full name in your message.</p> <p>You are responsible for all material covered in class. In-class activities cannot be made up, although missing one activity will not have an effect on your grade.</p>
<i>I missed class. What should I do?</i>	<p>If you must miss a class session, check the course website to access any materials that might be available for the missed class.</p>
<i>Can I use my phone or laptop in class?</i>	<p>Electronic devices are useful tools but often distract from learning. Make sure your cell phones are silenced and put away during class.</p> <p>You may use a laptop/tablet in class, but only to access class materials like textbooks.</p>
<i>What if I need an accommodation because of a disability?</i>	<p>The SLCC Disability Resources Center ensures access to education for all students. If you believe you need an accommodation because of the impact of a disability, please contact them at 801-957-4659 or ADS@slcc.edu.</p> <p>If an accommodation is approved, you and I will be notified in writing. Adjustments to tests, assignments, and test duration cannot be made without proper documentation.</p>
<i>Can I turn in an assignment late or make up a quiz or an exam?</i>	<p>Make-up or late exams will only be accepted in extraordinary situations. Other assignments will lose 10% a day for each day of lateness.</p>
<i>I think my grade is incorrect. What should I do?</i>	<p>If you believe there is a mathematical error in the calculation of your grade, please email me. Requests for a regrade should be submitted in writing.</p> <p>Please provide your original assignment and a detailed explanation of how you believe your work meets the requirements of the assignment/rubric.</p>
<i>What is the School's policy regarding academic integrity?</i>	<p>While enrolled at the college, students are subject to College jurisdiction.</p> <p>The college reserves the right to take disciplinary action against any student whose conduct, in the opinion of college representatives, is not in the best interests of the student, other students, or the college.</p> <p>Students who are disciplined should expect to find their sanctions enforced at all Salt Lake Community College campuses. All students are expected to abide by the college rules of conduct.</p>

Due Dates at a Glance

<i>August 22</i>	Ch0 PA Ch1 PA
<i>August 27</i>	Ch1 GA
<i>August 29</i>	CH2 PA
<i>September 3</i>	Ch2 GA
<i>September 5</i>	Ch3 PA Test #1
<i>September 10</i>	Ch3 GA
<i>September 12</i>	Ch4 PA-1
<i>September 17</i>	Ch4 GA-1
<i>September 19</i>	Ch4 PA-2
<i>September 24</i>	Ch4 GA-2
<i>September 26</i>	Ch5 PA-1 Test #2
<i>October 1</i>	Ch5 GA-1
<i>October 3</i>	Ch5 PA-2
<i>October 8</i>	Ch5 GA-2
<i>October 10</i>	Ch6-7 PA
<i>October 15</i>	Ch6-7 GA Mid-Term Exam
<i>October 17</i>	Fall break
<i>October 22</i>	Mid-Term Exam Due
<i>October 24</i>	Ch9 PA-1 Test #3
<i>October 29</i>	Ch9 GA-1
<i>October 31</i>	Ch9 PA-2
<i>November 5</i>	Ch9 GA-1
<i>November 7</i>	Ch10 PA

Due Dates at a Glance

<i>November 12</i>	Ch10 GA
<i>November 14</i>	Ch1 PA Test #4
<i>November 19</i>	Ch11 GA
<i>November 21</i>	Ch12 PA
<i>November 26</i>	Ch12 GA Ch13 PA
<i>November 28</i>	Thanksgiving Break November 27-29, 2024
<i>December 3</i>	Ch13 PA
<i>December 5</i>	Ch13 GA
<i>December 7-12</i>	Semester Project Final Exam All coursework due by 11:59pm (MST) December 12, 2024



School Policies and Resources

Emergency Evacuation Procedure:

Full details on emergency procedures can be found [here](#).

Set up email, phone and text alerts in your [MyPage](#) account. These conditions warrant notification

- power outage
- snow storm or other weather condition
- emergency notification system
- building evacuation

Student Code of Conduct:

Students are expected to follow the SLCC Student Code of Conduct found at <http://www.slcc.edu/policies/docs/stdtcode.pdf>

SLCC Outcomes:

SLCC is committed to fostering and assessing the following student learning outcomes in its programs and courses:

- Acquiring substantive knowledge in the field of their choice
- Developing quantitative literacies
- Developing the knowledge and skills to be civically engaged
- Thinking critically
- Communicating effectively

[Title IX Information](#)

Health and Wellness:

The Center for Health and Counseling has locations at both South City and Redwood Campuses. Full details on their services and locations can be found [here](#).

Diversity Statement:

The Division of Arts, Communication and Digital Media supports learning for all members of an increasingly diverse campus community. This diversity is a source of intellectual enrichment, but it can also lead to social friction. Advocates for diversity on campus can be found [here](#). The Division fosters the free exchange of ideas in an atmosphere of mutual respect, in an inclusive classroom, as these form necessary conditions for effective learning and will strive to challenge our own cultural biases and understand new perspectives and ideas.

Link to [Title IX Information](#)

ADA Statement:

SLCC embraces both the letter and the spirit of the Americans With Disabilities Act (ADA), which in part says, "...no qualified individual with a disability shall, by no reason of such disability, be excluded from participation in or be denied the benefits of the services, programs or activities of a public entity, or be subjected to discrimination by any such entity."

[Disability Resources Center](#) at 801-957-4659 (Voice) or 801-957-4646 (TTY).

Academic Integrity: All students are expected to engage in academically honest work.