

# Medical Terminology

HS - 1100 001

## Course Description

---

Course introduces the student to essential word parts and anatomical terms used in medical terminology. Medical Abbreviations are also introduced. Emphasis is placed on spelling and proper usage of the medical terms.

Semester(s): All

## Course Student Learning Outcomes

---

- Remember and identify over 350 different prefixes, word roots and suffixes.
- Demonstrate the correct spelling of over 350-word roots and medical terms.
- Define and diagram over 350-word roots and medical terms.
- Identify and define over 300 common medical abbreviations.
- Identify and define common medical abbreviations.

## College Wide Student Learning Outcomes

---

- 1. Acquire substantive knowledge in the discipline of their choice sufficient for further study, and/or demonstrate competencies required by employers to be hired and succeed in the workplace.
- 2. Learn to communicate effectively.
- 3. Learn to think critically.

- 4. Develop the knowledge and skills to be civically engaged, and/or to work with others in a professional and constructive manner.

## Institutional Policies

---

As members of our academic community, we would like to invite you to review the Institutional Syllabus which covers important policies and procedures. This document contains important links for students on the code of student rights and responsibilities, academic integrity, and grading policies, Title IX and other important acknowledgements. By familiarizing yourself with this information, you can help us create a safe and respectful environment for everyone.

For more information, navigate to the Institutional Policies tab on the [Institutional Syllabus](#) page.

## Course Prerequisites

---

None

## Engagement Plan

---

This course is face-to-face lecture. We meet twice a week, Monday and Wednesday. .

- I will respond to email within 2-3 days. I will offer feedback on major assignments within 2-3 days. The best way to contact me is via the Canvas Inbox, as I will prioritize this email over other modes of communication.

## Learning Support and Tutoring Services

---

We are pleased to offer a range of tutoring and learning support services to help you achieve your academic goals. Whether you need assistance with a specific subject or want to improve your study skills, you have many options for tutoring or other support.

To learn more about the services we offer and how to access them, visit the [Institutional Syllabus](#) page under the Tutoring and Learning Support tab. We encourage you to take

advantage of these resources to help you succeed in your studies. If you have any questions or would like to schedule a tutoring session, please don't hesitate to reach out to us. We are here to support you in any way we can.

## Advising and Counseling Support Services

At our institution, we are committed to supporting your academic and personal growth. That's why we offer a range of advising and counseling services to help you navigate the challenges of college life. To learn more about the resources available to you and how to access them, visit the [Institutional Syllabus](#) page under the Advising and Counseling Support Services tab. Our advising team and the support centers across campus are here to support you in achieving your goals and overcoming any obstacles you may face.

## Keys for Success (how to succeed in the course)

### REQUIRED ASSESSMENTS:

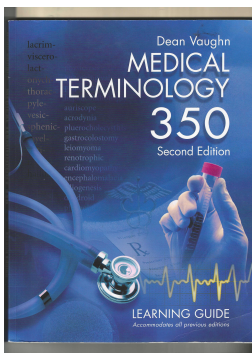
Please refer to the calendar due dates for a list of lesson due dates. This schedule is subject to change.

- Weekly quizzes will be given in the lecture sections; this includes 10 abbreviations with definition, 15-word elements and 10 medical words with definitions. Questions will be given orally, and the student will be spelling the words given and provide a definition.
  1. Student will be graded on correct spelling of medical terms and elements and correct definition of medical terms and elements.
  2. Abbreviation definition
    - Weekly quizzes will be given.
    - Student will be graded on correct spelling of medical terms and elements and correct definition of medical terms and elements
- Workbook Element Recognition and Interpretation Exercises completed and submitted in class. Element recognition is worth 10 points and the Interpretation Exercise is worth 10 points. Assignments can be submitted online, or student will bring their workbooks in for grading.

1. Late work will be accepted; however, one point may be taken for each assignment that is submitted late. Late assignment will need to be submitted in class and are due by the end of the semester.
  2. If a student misses a quiz, the student can “make up” one quiz by the end of the semester.
  3. The abbreviation final and medical term final will be taken in class or on set dates. If the student misses the date the finals the points will be lost
- Abbreviation Final Examination
  - Medical terminology - Final Exam covering lessons 1-14

## Required Text or Materials

---



**Title: Medical Terminology 350 Dean Vaughn**

**Authors:** Dean Vaughn

**Edition:** 2th edition

For more information on textbook accessibility, contact Accessibility & Disability Services at [ads@slcc.edu](mailto:ads@slcc.edu).

## Additional Materials

---

Flashcards are optional be recommended

## Student Academic Calendar

---

As students you should be aware of all important dates in the semester, such as the day that courses begin and end, as well as the drop date and the last day to withdraw. To learn more about those dates, navigate to the Student Academic Calendar below:

## Brief Description of Assignments/Exams

---

Students are graded on a fixed-point basis. Additional Extra credit will not be giving in this course. Missing assignments and quizzes will needed to be submit by a set date, See course calendar.

Each week (class period) lesson quiz will be given. Week assignments are due.

Midterm

Abbreviation Final

Medical Term Final

## Grading Scale

---

Grading Scale

### **Grading**

Grade	Percent
A	95-100%
A-	90-94%
B+	87-89%
B	84-86%
B-	80-83%
C+	77-79%
C	74-76%
C-	70-73%
D+	67-69%
D	64-66%
D-	60-63%
E	0-59%

## How to Navigate to Canvas

---

## Assignment Schedule

---

Due Date	Assignment Name	Assignment Type	Points
9/8/25	<a href="#">Quiz #1</a>	Assignment	120
9/8/25	<a href="#">Work Book Chapters #1</a>	Assignment	20
9/15/25	<a href="#">Quiz #2</a>	Assignment	120
9/15/25	<a href="#">Work Book Chapter #2</a>	Assignment	20
9/22/25	<a href="#">Quiz #3</a>	Assignment	120
9/22/25	<a href="#">Work Book Chapter #3</a>	Assignment	20
9/29/25	<a href="#">Quiz #4</a>	Assignment	120
9/29/25	<a href="#">Work Book Chapter #4</a>	Assignment	20
10/6/25	<a href="#">Quiz #5</a>	Assignment	120
10/6/25	<a href="#">Work Book Chapter #5</a>	Assignment	20
10/13/25	<a href="#">Quiz #6</a>	Assignment	120
10/13/25	<a href="#">Work Book Chapter #6</a>	Assignment	20
10/20/25	<a href="#">Quiz #7</a>	Assignment	120
10/20/25	<a href="#">Work Book Chapters #7</a>	Assignment	20
10/27/25	<a href="#">Quiz #8</a>	Assignment	120

<b>Due Date</b>	<b>Assignment Name</b>	<b>Assignment Type</b>	<b>Points</b>
10/27/25	<a href="#"><u>Work Book Chapter #8</u></a>	Assignment	20
11/3/25	<a href="#"><u>Quiz #9</u></a>	Assignment	120
11/3/25	<a href="#"><u>Work Book Chapter #9</u></a>	Assignment	20
11/10/25	<a href="#"><u>Work Book Chapter #10</u></a>	Assignment	20
11/10/25	<a href="#"><u>Quiz #10</u></a>	Assignment	120
11/17/25	<a href="#"><u>Quiz #11 and #12 combined</u></a>	Assignment	120
11/17/25	<a href="#"><u>Work Book Chapter #11 and #12</u></a>	Assignment	40
11/24/25	<a href="#"><u>Quiz #13</u></a>	Assignment	120
11/24/25	<a href="#"><u>Work Book Lesson #13</u></a>	Assignment	20
12/1/25	<a href="#"><u>Quiz #14</u></a>	Assignment	100
12/1/25	<a href="#"><u>Work Book Chapter #14</u></a>	Assignment	20
12/3/25	<a href="#"><u>Extra Credit Words and Midterm (Midterm is due 11/3/2025)</u></a>	Assignment	0
12/8/25	<a href="#"><u>Abbreviation Final Taken in Class</u></a>	Assignment	150
12/15/25	<a href="#"><u>Medical Terminology Final Taken in class</u></a>	Assignment	200