

Anatomy and Physiology

TEMA - 1040 301

Course Description

The Anatomy and Physiology course is designed to familiarize the student with the plan and structure of the human body, its function under normal, healthy conditions, and an introduction to the body's response to illness and disease. Instruction covers an overview of all organ systems, including diagnostic treatment modalities. Medical terms as they relate to the body and correct spelling and pronunciation are taught.

Semester(s): All

Course Student Learning Outcomes

- Locate and label major organs and structures in the body systems.
- Identify and state the function of the major anatomical components of the human body.
- Describe common disorders associated with each major anatomical component.
- Identify common pathology related to each body system.

Course Prerequisites

None.

Transfer/Certification/Licensure/Employment Information

An SLCC Certificate is earned after successfully completing all the courses within the program (the entire training program). This type of certificate provides evidence to

employers that a level of competence has been achieved.

Additionally, students take the tests for industry-standard certificates when completing specific courses intended to prepare students for those certificates (e.g., CPR, First Aid, etc.).

A national certification test must be taken before completing the Clinical Medical Assisting program, typically during the externship. Students may complete any of 3 certifications through the AMT, NCCT, or NHA. Please speak with your instructor to learn about the differences and costs associated with each.

Engagement Plan

Instructors are open and available to help you in the classroom for face-to-face interaction, through

college email or Canvas comments and messaging, Zoom, and telephone as posted within the syllabus

and the 'Home Page' in Canvas including the 'Communications Statement' (with exception of holidays

and campus closures). Feel free to reach out to us!

We will respond to email within 24 hours. The best way to contact us is via the Canvas Inbox, as we will prioritize this email over other modes of communication.

In this course we will be posting interactive announcements which will offer specific opportunities for class questions and participation in activities.

Keys for Success (how to succeed in the course)

Communication:

Instructors are open and available to help you in the classroom for face-to-face interaction, through college email or Canvas comments and messaging, Zoom, and telephone as posted within the syllabus and the 'Home Page' in Canvas including the

'Communications Statement' (with the exception of holidays and campus closures e.g. semester breaks). Feel free to reach out to us!

Clothing/Lab Dress Code:

Scrubs may be worn in the classroom, and are required in the lab area and for externship (some externship facilities have specific requirements eg. U of U Red, Black, or Navy Blue scrubs only). Closed-toe shoes are also required in the laboratory/clinical setting areas when practicing skills.

Food and Drinks:

There will be no food or drinks allowed in the computer or lab area of the classroom. A 'Break Room' with a microwave and refrigerator is available for student use.

Cellular Phone Usage:

Cellular phones will be turned to silent mode, or if they do not have a silent option, they will be turned off while in the classroom. Any phone conversation must be made outside the classroom to avoid disrupting others. Phones are not allowed at the testing stations.

Classroom Safety:

An emergency guideline and evacuation route are posted in the classroom. As you progress through the program, you will learn OSHA safety standards in a medical setting. There is a binder with Material Safety Data Sheets located in the classroom to use as a reference for an incident involving hazardous materials. Please be aware of the location of these safety guidelines.

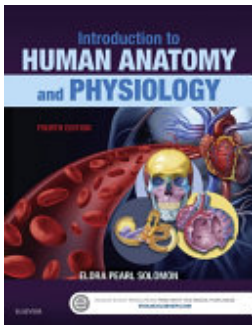
Student Responsibilities:

All students are accountable for the following:

1. Stay engaged and on task (read, watch videos, listen, take notes, ask questions, complete assignments, schedule, and complete skills)
2. Log into the LMS (Canvas - the College's learning management system) for course materials, presentations, and examinations.

3. Follow the instructor's directions AT ALL TIMES.
4. Ask the instructor for assistance after FIRST having attempted to resolve the problem themselves.
5. Complete **12-24 hours** of coursework each week for on-time course completion (based on part-time vs full-time enrollment status).

Required Text or Materials



Title: Introduction to Human Anatomy and Physiology

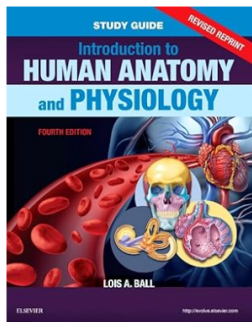
ISBN: 9780323392839

Authors: Eldra Pearl Solomon

Publisher: Elsevier Health Sciences

Publication Date: 2015-08-26

Edition: 4th



Title: Study Guide for Introduction to Human Anatomy and Physiology

ISBN: 9780323531238

Authors: Lois A. Ball

Publisher: Elsevier

Publication Date: 2017-01-01

Edition: 4th

For more information on textbook accessibility, contact Accessibility & Disability Services at ads@slcc.edu.

Additional Materials

Clothing Requirements (in addition to SLCC Student policies):

- Closed toe shoes.
- Scrubs

Optional Equipment for Skills/Externship:

- Watch with second hand.
- Stethoscope
- Blood Pressure Cuff / Sphygmomanometer

Brief Description of Assignments/Exams

- **Module 1-The Human Body**
- **Module 2-The Chemistry of Life**
- **Module 3-Cell Structure**
- **Module 4-Cellular Metabolism and Reproduction: Mitosis and Meiosis**
- **Module 5-Tissues**
- **Module 6-The Integumentary System**
- **Module 7-The Skeletal System**
- **Module 8-The Articular System**
- **Module 9-The Muscular System**
- **Module 10-The Nervous System: Introduction, Spinal Cord, and Spinal Nerves**
- **Module 11-The Nervous System: Brain, Cranial Nerves, Autonomic Nervous System, Special Senses**
- **Module 12-The Endocrine System**
- **Module 13-The Blood**
- **Module 14-The Cardiovascular Circulatory System**
- **Module 15-The Lymphatic System**
- **Module 16-Nutrition and the Digestive System**
- **Module 17-The Respiratory System**

Assignment Schedule

Due Date	Assignment Name	Assignment Type	Points
	Anatomy & Physiology Final Practice	Quiz	0
	Anatomy & Physiology Final Practice	Quiz	0
	Arteries Review Activity	Quiz	0
	Arteries Review Activity	Quiz	0
	Brain Review Activity	Quiz	0
	Brain Review Activity	Quiz	0
	Cardiovascular System Case Study	Assignment	100
	Chapter 1 Practice Quiz	Quiz	10
	Chapter 1 Study Guide	Assignment	20
	Chapter 1 Test	Quiz	100
	Chapter 10 Practice Quiz	Quiz	10
	Chapter 10 Study Guide	Assignment	20
	Chapter 10 Test	Quiz	100
	Chapter 11 Practice Quiz	Quiz	10

Due Date	Assignment Name	Assignment Type	Points
	Chapter 11 Study Guide	Assignment	20
	Chapter 11 Test	Quiz	100
	Chapter 12 Study Guide	Assignment	20
	Chapter 12 Test	Quiz	100
	Chapter 13 Study Guide	Assignment	20
	Chapter 13 Test	Quiz	100
	Chapter 14 Study Guide	Assignment	20
	Chapter 14 Test	Quiz	100
	Chapter 15 Study Guide	Assignment	20
	Chapter 15 Test	Quiz	100
	Chapter 16 Study Guide	Assignment	20
	Chapter 16 Test	Quiz	100
	Chapter 17 Practice Quiz	Quiz	10
	Chapter 17 Study Guide	Assignment	20
	Chapter 17 Test	Quiz	100
	Chapter 2 Practice Quiz	Quiz	10

Due Date	Assignment Name	Assignment Type	Points
	Chapter 2 Study Guide	Assignment	20
	Chapter 2 Test	Quiz	100
	Chapter 3 Practice Quiz	Quiz	10
	Chapter 3 Study Guide	Assignment	20
	Chapter 3 Test	Quiz	100
	Chapter 4 Practice Quiz	Quiz	10
	Chapter 4 Study Guide	Assignment	20
	Chapter 4 Test	Quiz	100
	Chapter 5 Practice Quiz	Quiz	10
	Chapter 5 Study Guide	Assignment	20
	Chapter 5 Test	Quiz	100
	Chapter 6 Practice Quiz	Quiz	10
	Chapter 6 Study Guide	Assignment	20
	Chapter 6 Test	Quiz	100
	Chapter 8 Practice Quiz	Quiz	10
	Chapter 8 Study Guide	Assignment	20

Due Date	Assignment Name	Assignment Type	Points
	Chapter 8 Test	Quiz	100
	Chapter 9 Practice Quiz	Quiz	10
	Chapter 9 Study Guide	Assignment	20
	Chapter 9 Test	Quiz	100
	Digestive Review Activity	Quiz	0
	Digestive Review Activity	Quiz	0
	Digestive System Case Study	Assignment	100
	Endocrine Review Activity	Quiz	0
	Endocrine Review Activity	Quiz	0
	Endocrine System Case Study	Assignment	100
	Heart Review Activity	Quiz	0
	Heart Review Activity	Quiz	0
	Histology Case Study	Assignment	100
	Immune System Case Study	Assignment	100
	Integumentary Case Study	Assignment	100
	Integumentary Review Activity	Quiz	0

Due Date	Assignment Name	Assignment Type	Points
	Integumentary Review Activity	Quiz	0
	Introduce Yourself	Discussion	0
	Introduce Yourself	Discussion	0
	Introduce Yourself	Discussion	0
	Introduce Yourself	Discussion	0
	Introduce Yourself	Discussion	0
	Major Body Cavities Review Activity	Quiz	0
	Major Body Cavities Review Activity	Quiz	0
	Muscles Review Activity	Quiz	0
	Muscles Review Activity	Quiz	0
	Muscular System Case Study	Assignment	100
	Nervous System Case Study	Assignment	100
	Planes and Directions Review Activity	Quiz	0
	Planes and Directions Review Activity	Quiz	0
	Reproduction System Case Study	Assignment	100
	Reproductive Review Activity	Quiz	0

Due Date	Assignment Name	Assignment Type	Points
	Reproductive Review Activity	Quiz	0
	Respiratory Review Activity	Quiz	0
	Respiratory Review Activity	Quiz	0
	Respiratory System Case Study	Assignment	100
	Skeletal System Case Study	Assignment	100
	Skeleton Review Activity	Quiz	0
	Skeleton Review Activity	Quiz	0
	Skull Review Activity	Quiz	0
	Skull Review Activity	Quiz	0
	Spine Review Activity	Quiz	0
	Spine Review Activity	Quiz	0
	Summative Assessment 1- Requires Respondus LockDown Browser	Quiz	100
	Summative Assessment 2- Requires Respondus LockDown Browser	Quiz	100

Due Date	Assignment Name	Assignment Type	Points
	Summative Assessment 3- Requires Respondus LockDown Browser	Quiz	102
	Summative Assessment 4- Requires Respondus LockDown Browser	Quiz	102
	The Ear Review Activity	Quiz	0
	The Ear Review Activity	Quiz	0
	The Eye Review Activity	Quiz	0
	The Eye Review Activity	Quiz	0
	Urinary Review Activity	Quiz	0
	Urinary Review Activity	Quiz	0
	Urinary System Case Study	Assignment	100
	Veins Review Activity	Quiz	0
	Veins Review Activity	Quiz	0

Grading Scale

SLTC Grading System

A = 100-90% → Excellent / Mastery

Consistently exceeds expectations, very few errors.

B = 89-78% → Satisfactory / Competent

Meets expectations; minor errors but overall skill is demonstrated.

E = Below 78% → Emerging / Needs Improvement

Does not yet meet expectations; needs more practice before reassessment

Mastery of competency in this competency-based program is demonstrated when you successfully complete the learning objectives and competencies within the coursework as defined. All components of the course must be mastered before moving forward. It is expected that each course be completed within the published course hours. At the end of your coursework, you will be rated according to the grading scale noted above based on your demonstrated ability of the course's established competencies. Additionally, you can earn credit for a course through Curriculum Exceptions or Credit for Prior Learning (CPL) by showing proof of previously completed course work.

Academic Integrity

PLAGIARISM: Students are expected to reference all sources of information. Any plagiarism will result

in failure of the assignment and possible failure of the course. The information must not be copied from

other student's work, textbook or internet sources.

Please refer to the SLCC Intuitional Syllabus for additional college information

How to Navigate to Canvas

Institutional Policies

As members of our academic community, we would like to invite you to review the Institutional Syllabus which covers important policies and procedures. This document contains important links for students on the code of student rights and responsibilities, academic integrity, and grading policies, Title IX and other important acknowledgements. By familiarizing yourself with this information, you can help us create a safe and respectful environment for everyone.

For more information, navigate to the Institutional Policies tab on the [Institutional Syllabus](#) page.

[Learning Support and Tutoring Services](#)

We are pleased to offer a range of tutoring and learning support services to help you achieve your academic goals. Whether you need assistance with a specific subject or want to improve your study skills, you have many options for tutoring or other support.

To learn more about the services we offer and how to access them, visit the [Institutional Syllabus](#) page under the Tutoring and Learning Support tab. We encourage you to take advantage of these resources to help you succeed in your studies. If you have any questions or would like to schedule a tutoring session, please don't hesitate to reach out to us. We are here to support you in any way we can.

[Advising and Counseling Support Services](#)

At our institution, we are committed to supporting your academic and personal growth. That's why we offer a range of advising and counseling services to help you navigate the challenges of college life. To learn more about the resources available to you and how to access them, visit the [Institutional Syllabus](#) page under the Advising and Counseling Support Services tab. Our advising team and the support centers across campus are here to support you in achieving your goals and overcoming any obstacles you may face.

[Student Academic Calendar](#)

As students you should be aware of all important dates in the semester, such as the day that courses begin and end, as well as the drop date and the last day to withdraw. To learn more about those dates, navigate to the Student Academic Calendar below:

[SLCC Student Academic Calendar](#)